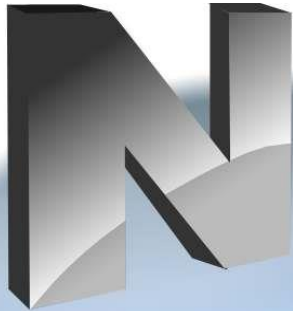


# Net Control<sup>2</sup> Classroom

# Net Control<sup>2</sup> Professional



## for macOS

## INSTALLATION GUIDE

Revision 2.0  
(April, 2024)

Based on version 24.3

### General information

#### IMPORTANT!

While the procedure of the teacher and student module installation is quite common for macOS designated products, beginning with macOS Mojave (10.14), operating systems require manual authorization of certain actions of the software. We recommend configuring authorizations of the operating system on student computers immediately after installation, otherwise students will be able to disable some software features. Please refer to the **Chapter F of this guide for more information.**

Net Control<sup>2</sup> Classroom and Net Control<sup>2</sup> PRO are classroom management products for easy controlling, monitoring and managing computers in local networks.

The software consists of two main parts – **Teacher Component** and **Student Component**. Net Control<sup>2</sup> Professional includes also Connection Server component that is intended for coordination of teacher and student connections.

You need to install the student component of the software on each student computer that will be managed with **Net Control<sup>2</sup> Classroom** software. *The Teacher Component* should be installed on each computer that will be used to control other computers. Both components may be installed on the same computer.

This guide describes installation and primary configuration of Net Control<sup>2</sup> software on computers that use macOS operating system.

Other manuals and guides are available in the *Downloads* section of our website:  
<https://www.netcontrol2.com/downloads>

## Hardware requirements and software environment

The version 24.3 supports OS X 10.9 – 10.11, macOS 10.12 – 14.0 (Mavericks - Sonoma) on compatible hardware.

Teacher and student computers should be connected into a local network (Ethernet or wireless).

### A. Packages

For macOS, we provide separate packages for student and teacher modules of Net Control 2 Classroom and Net Control 2 Professional products. The packages can be downloaded at any moment from the **Downloads** section of your *customer area account* on our website:  
<https://www.netcontrol2.com/cust/>.

Login credentials for your customer area account, you can find at the bottom of your license, in the **Resources** section.

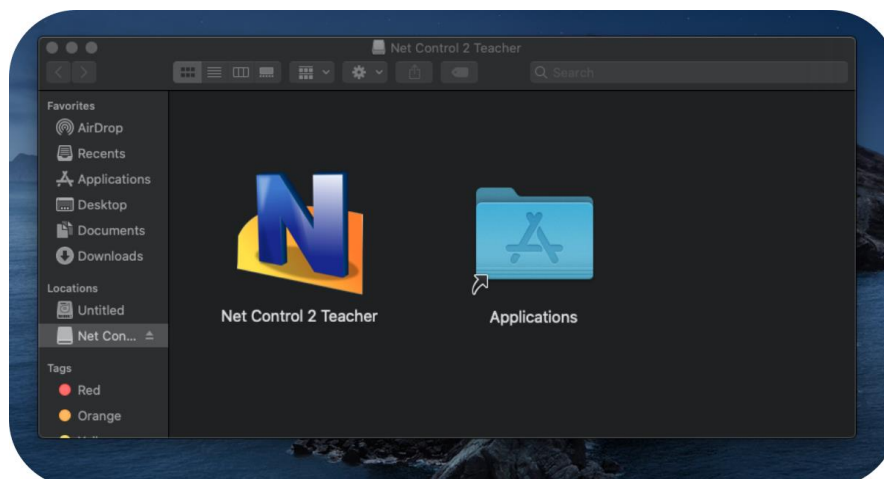
The teacher module is available as a DMG package.

The student module is available as a PKG package and requires administrator privileges for installation and removal.

### B. Teacher module installation

To install the teacher module:

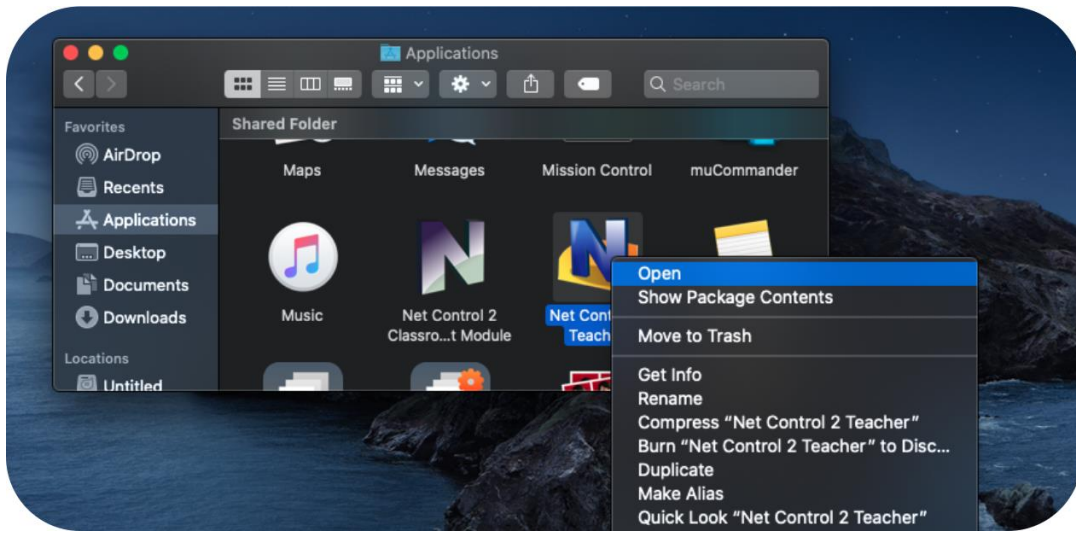
1. Download the DMG package from your customer area account.
2. Double click it to mount in the system.
3. In the appeared Finder window, drag **Net Control 2 Teacher** icon over **Applications** folder:



#### 4. Authorize opening.

Due to the teacher module is downloaded outside of App Store, macOS GateKeeper will prevent opening the program unless the operation is specially authorized by the user. Particularly, you will be unable to open the program from Launchpad. Such authorization is required only once after each new installation of the teacher module downloaded from Internet.

To authorize the application, please open **Finder**, on the left pane of the Finder window, select the **Applications** folder. Find **Net Control 2 Teacher** application, **press Ctrl key on the keyboard** and **click** on the icon. In the appeared menu, click **Open** menu command:



Confirm the operation clicking the **Open** button in the appeared prompt. In several cases, the system may prompt to open the package again in Finder. In this case, please repeat the operation: please open another Finder window, find the package and confirm opening with **Ctrl + Click** and **Open** menu command.

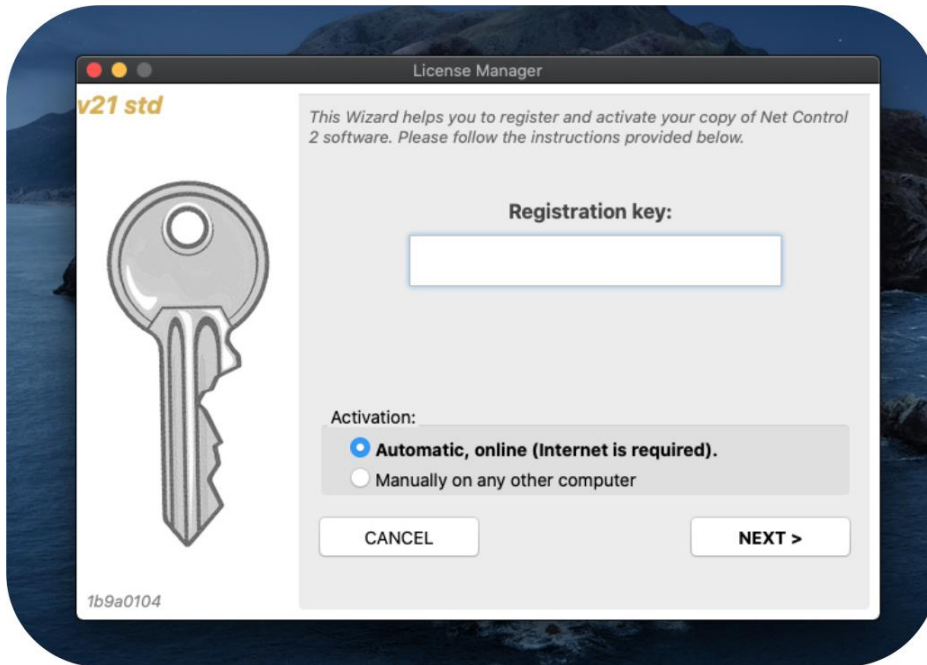
After the application opening is authorized in such way, further it may be opened from **Launchpad** or **Finder** in a standard way.

---

## C. Teacher module initial configuration.

### [Net Control 2 Classroom]

On the first start, if the teacher module was not activated on this computer before, you will be prompted to register and activate the software:



Please enter your registration key in the respective field and click **Next** button. The software will be automatically activated.

Internet connection is required for the automatic activation. If the Internet connection is limited or absent, or access to activation servers is unavailable, you can activate the software through any other computer or device that has access to Internet. In this case, please select the **“Manually on any other computer”** option on the first page of the activation window, then click Next button. On the next page, in the top field you will be provided with a special activation link. Please copy it to the device that has access to Internet and open the link there. As a result, you will be provided with an activation block, that should be copied back to the teacher computer and pasted in the License Manager window, in the bottom field.

#### [Net Control 2 PRO]

With Net Control 2 Professional, you do not need to activate each copy of the teacher module, instead the activation is done on the Connection Server computer, once for all machines. On the first start, the teacher module will display a prompt where you need to specify an IP address or DNS name of your Connection Server computer, and credentials of the teacher account created in Connection Server Management Console on the Connection Server computer.

For more information, please refer the Installation and Configuration guide for Net Control 2 PRO for Windows available on our website.

After the software is activated, you will need to specify whether the teacher module will be used to control only Mac computers or both Mac and Windows-based computers.



If the “**macOS devices only**” option is selected, only the features available for macOS devices will be shown in the teacher module; otherwise, if the “**Windows and macOS devices**” mode is selected, the teacher module will also provide access to features that are available on Windows-based student computers. Click **Next** to confirm the choice. If you need to change the mode in future, please click the main menu command **N – Options – Options** command of the teacher module, then modify “**Hide Windows-only features**” option on the “**Interface**” page.

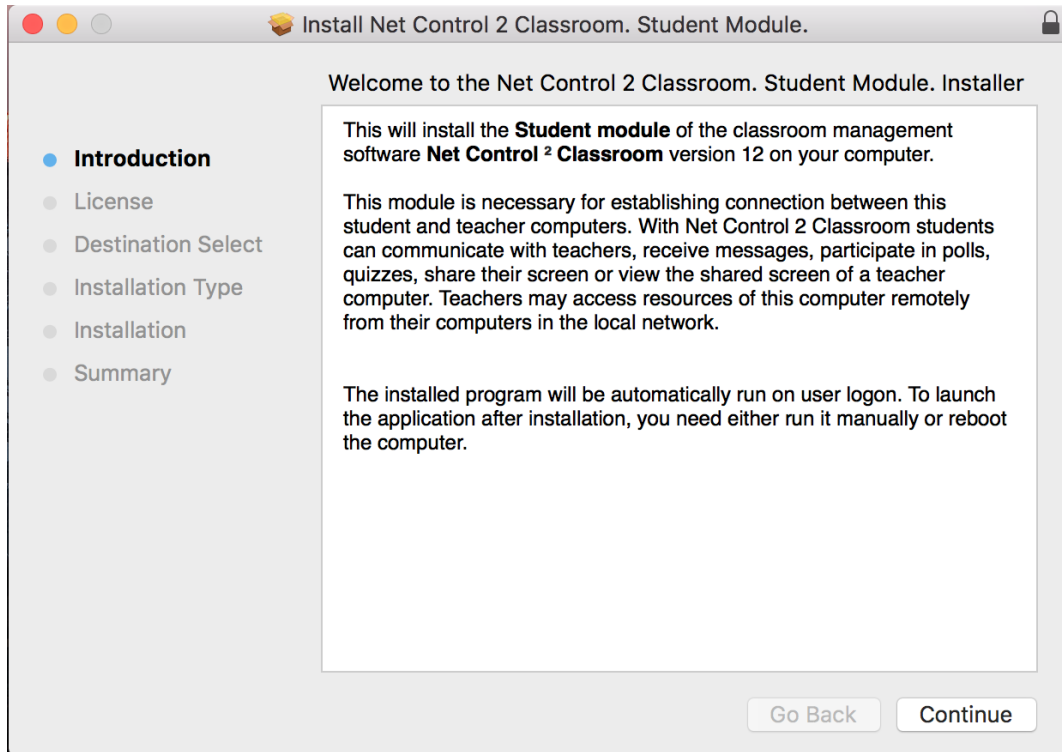
## D. Student module installation.

To simplify the student module deployment, we recommend installing the software on teacher computers first.

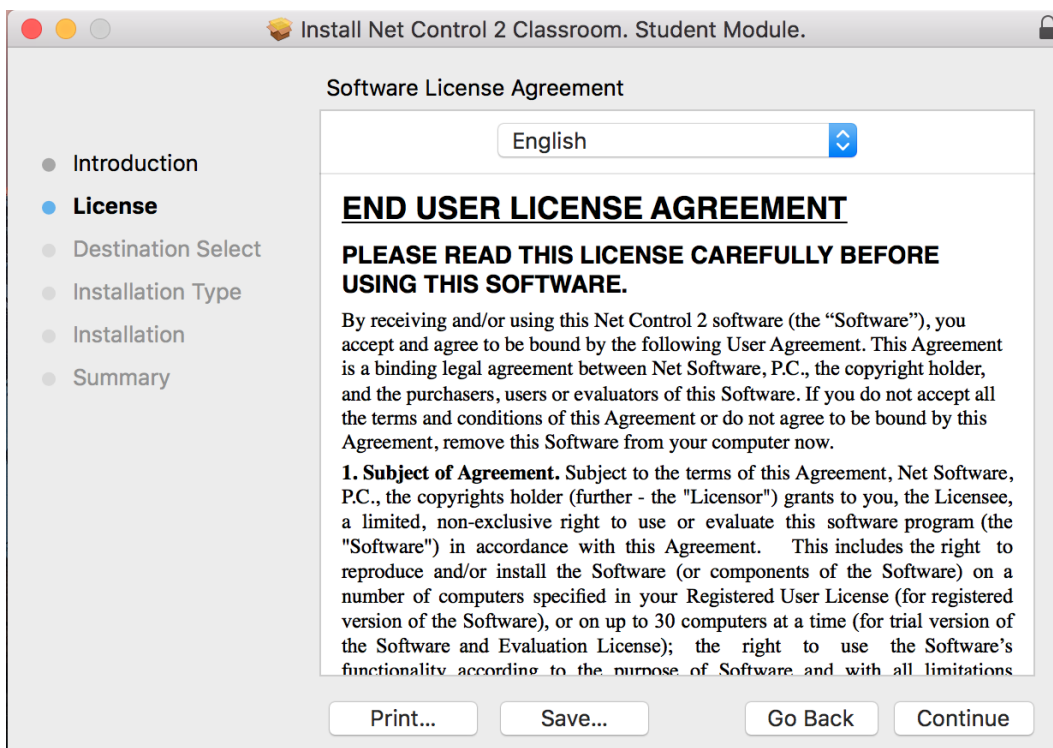
Administrator privileges are required to install or to remove the software.

To install the student module for macOS:

1. Please download the **PKG** package of the student module for macOS from your customer area account on our website.
2. Double click the downloaded package to begin installation. **GateKeeper may prevent installation of the software downloaded from Internet outside of App Store.** In this case, please find the downloaded package with **Finder**, press **Ctrl** and click on the package, click **Open** in the appeared context menu, confirm the operation in the appeared prompt.



### 3. Please read and accept (if you agree) the End-User License Agreement.

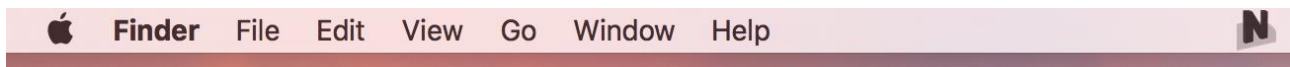


### 4. Select the destination folder

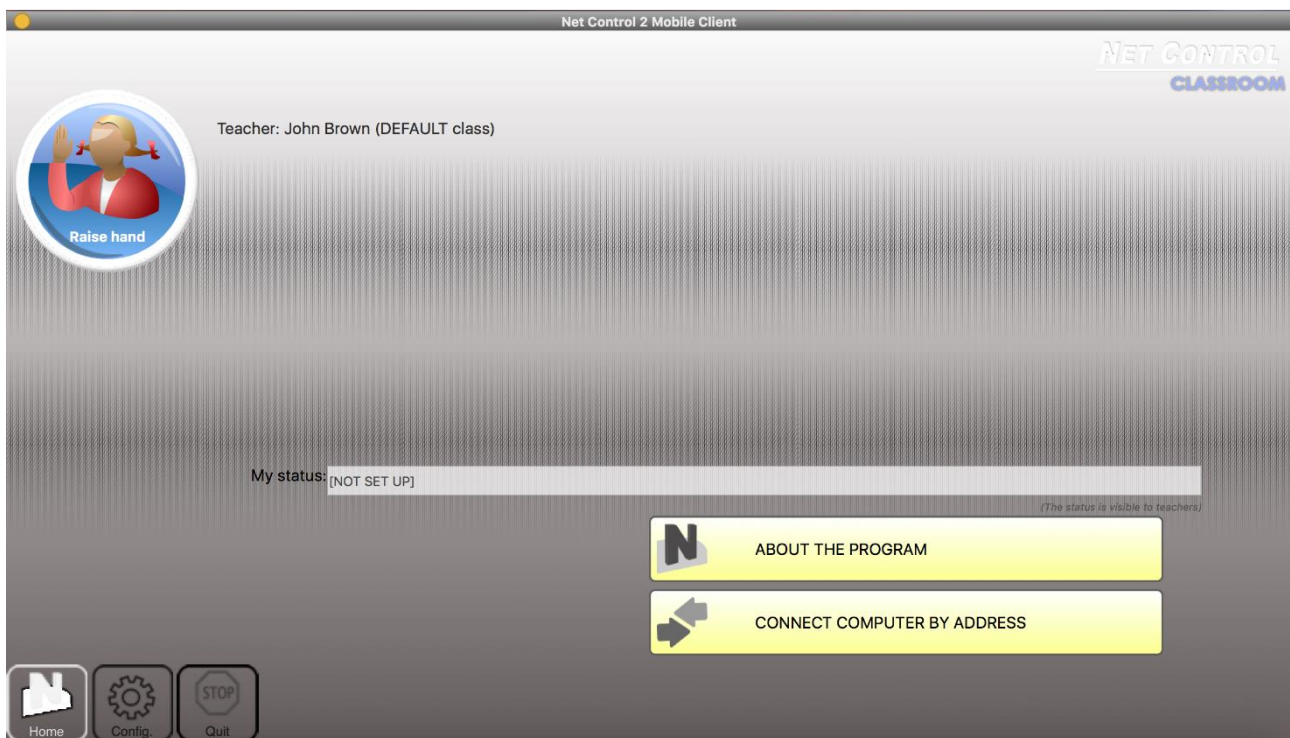
We recommend to use the default path on the main, system hard disk of the computer.

### 5. Reboot the computer to finish installation.

The student module will be registered for automatic startup on user logon. The student module will be visible on teacher computers and respective functionality will be available only after a user logs in to the system.



When the student module is loaded and running, the most important features, statuses and information are available in the Student Console. To open the student console and access its features, click **Net Control 2 icon** in the *macOS main menu* (the **N** icon).



To hide the Student Console, click “Hide” button on the top-left hand corner of the student console window:



## E. Student module initial configuration.

On the first start, the student module will automatically display the **Configuration** page where you can set up the software.

Settings are stored outside of the program module and persist after removal for further re-installation of the software.

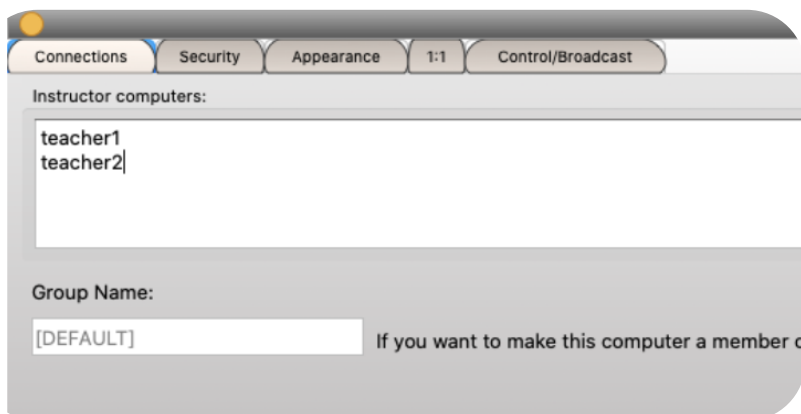
To change settings at any moment later, please click **Net Control 2 icon** on the main menu bar, then use **Configure** button of the *Student console*:



**The minimum configuration of the student module assumes that you need to provide an address of the teacher computer (Connection Server computer for PRO), where this student computer should connect:**

#### [Net Control 2 Classroom]

In the configuration window, on **Connections** page, in **Instructor computers** field, please specify one or several IP addresses or computer names of teacher computers, one address per line:



If your network uses the *static IP addressing* (IP addresses are permanent for each computer in the network), you need to use the IP address for addressing of the teacher computer; otherwise, or if you do not know what addressing mode is used, you need to use the DNS name of the teacher computer instead.

To find the IP address or DNS name of the teacher computer, please use either standard macOS tools and features (for example, **System Preferences -> Network** for IP addresses or **System Preferences -> Sharing** for the DNS name), or just please open the teacher module, then click **About** tab (at the bottom of the main window); and click **“IP address or DNS name”** button; the IP address and DNS name of the teacher computer will be shown.

#### [Net Control 2 PRO]

With Net Control 2 Professional, instead of addresses of teacher computers, you need to specify an IP address or DNS name of the Connection Server computer.



## F. Authorizations.

Beginning with macOS Mojave (10.13), the operating system requires applications to obtain explicit authorization from users on access to sensitive features of the system. This list of the features that should be authorized depends on the macOS version, and includes, particularly, the inter-process scripting, access to Documents, Desktop and Downloads folders, screen capture features and so on.

The information provided below is based on macOS 14 (Sonoma). Names of settings, menus and windows in other macOS versions may differ.

The authorizations should be provided once per installation and are controlled with macOS **System Settings** → **Privacy & Security** page.

The following authorizations are required for the student module:

**Files and Folders** (to **Documents**, **Desktop** and **Downloads** folders);

**Accessibility** (required by Remote Desktop / Control tool);

**Screen & System Audio Recording** (required for screen capturing);

**Automation** (for application and Internet restrictions).

To add authorizations:

- Open **Privacy & Security** page of macOS **System Settings**;
- Open the necessary authorization group;
- Click + under the applications list ;
- Find **Net Control 2 Classroom / Pro. Student Module** and click **Open**.

Repeat the operation for other authorizations.

Alternatively, after installation of the software on teacher and student computers; on the teacher computer, in the teacher console please select student computers, and apply the following tools and commands:

Control;

Send / Collect (and send some files to students);

Restrictions -> Internet -> Block Internet (do not forget to Unblock Internet after authorizations are applied).

After using the specified above tools, the system will prompt to enable the respective authorizations.

Certain authorizations can be also initiated from the Student Console, on the About the Program page, clicking the **“Call authorization requests”** button

## G. Student module settings.

Important settings that you may need to set up initially in the student module, include:

**Group Name** (on “Connections” tab) – if you have several classrooms in the network that should be listed on teacher computers separately, in different groups, specify here a unique name of the classroom (group), the name should be the same for all computers of the group.

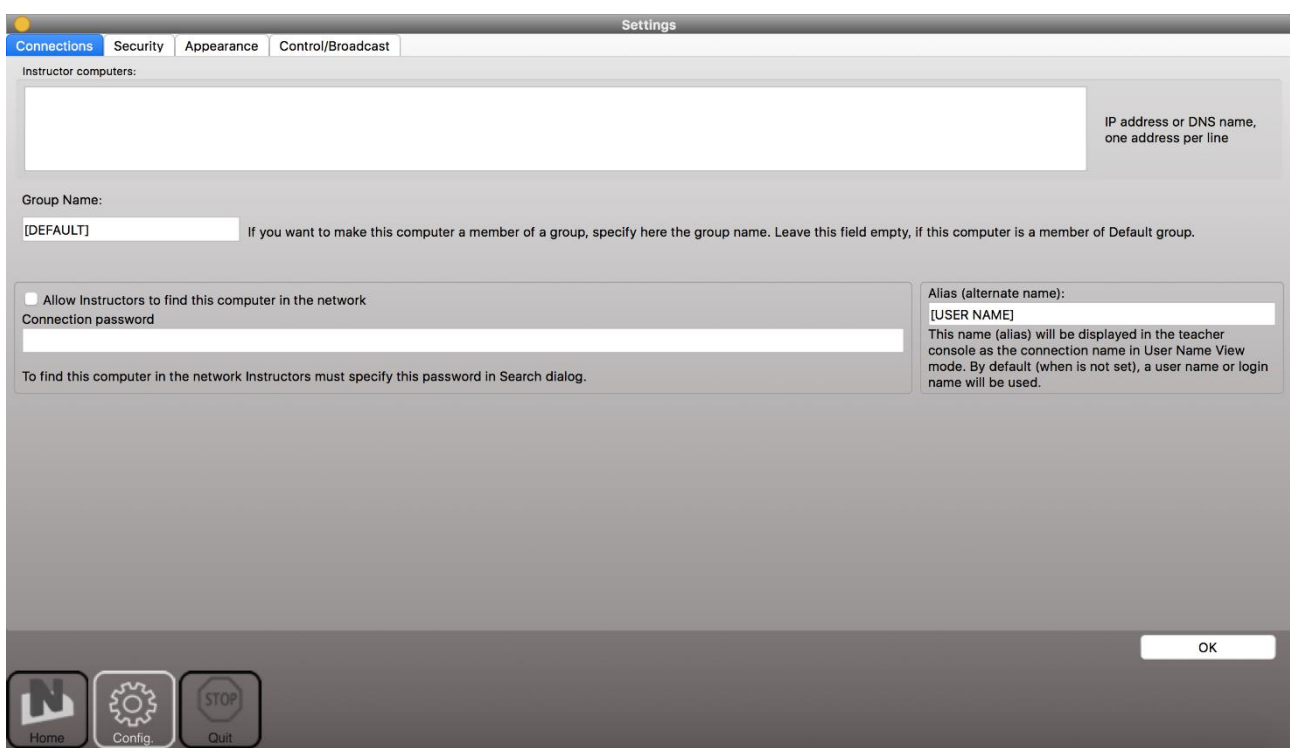
**Administrator password** (“Security” tab) – set up a password here to prevent unauthorized access to the student module settings and Stop/Exit commands of the student console.

**Signal on Connection** (“Security” tab) – enables a sound signal that will be played when the student connects to a teacher. This option is enabled by default.

**Show popup notifications for certain operations** (“Appearance” tab) – enables popup notifications when a teacher performs some controlling operations: connects to the computer using Control / Remote Desktop commands, locks the computer and so on. This option is enabled by default.

### ***Other settings***

#### ***Connections***



### [Net Control 2 Classroom]

**Instructor computers** – a list of teacher computers, to which this student module will be connected. The teacher computers should be referenced by their IP address or DNS name (computer name), one address per line.

**Group Name** – Group Name to which the computer belongs.

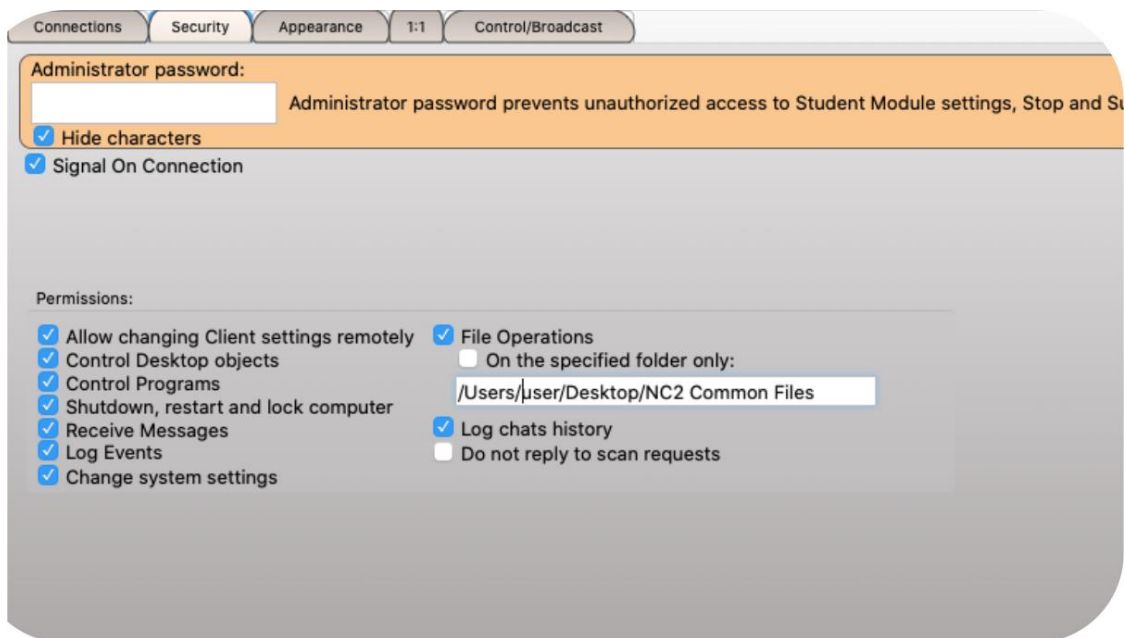
**Allow Instructors to find this computer in the network, Connection Password** – enables finding this computer in the network by teachers not specified in the Instructor computers list, for more information please see [Chapter E](#) of the Installation and Configuration Guide.

### [Net Control 2 PRO]

**Connection Server** – an IP address or DNS name of the Connection Server computer.

**Alias (alternate Name)** – this name will be displayed when Teacher switches the view mode from *Computer Name View* to *User Name View*. If it is left blank or [USER NAME] value is specified, the name of the currently logged in user will be displayed.

## Security



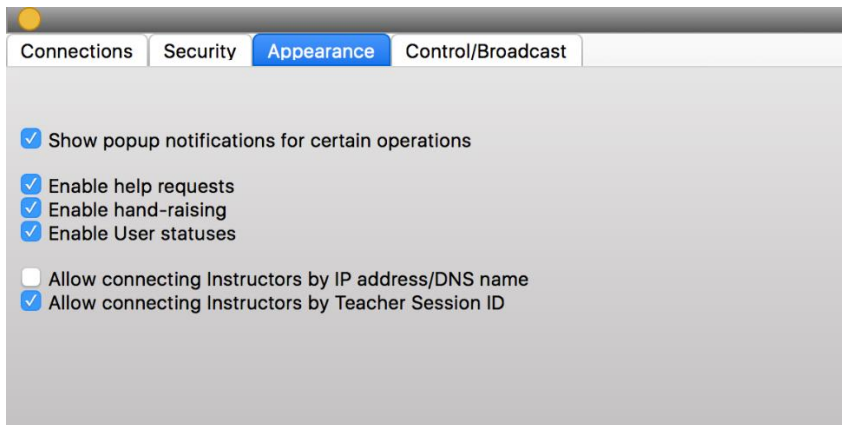
**Administrator password** is used when a user attempts to change the settings of the student module or clicks the menu commands "Stop" or "Exit". We recommend setting up this parameter if you need to prevent stopping the Net Control 2 Classroom student module or unauthorized configuring the service.

**Signal On Connection** - when enabled, on any established connection with a teacher, the student module will play a sound signal.

**PERMISSIONS** – allows limiting the functionality of service. When permission is disabled, all features related to this permission will be disabled:

- **Allow changing Client settings remotely** - when this permission is set, the Teacher can change the student module settings remotely from the teacher module.
- **Control Desktop objects** – if enabled, teachers will be able to access Desktop screenshots, thumbnails, control the computer remotely with a keyboard and mouse and access other desktop-related features.
- **File Operations** – a permission for file operations between computers. When additionally, "**On the specified folder only**" option is set, all file operations may be performed within the specified folder only.
- **Control programs** – a permission to execute and terminate programs from the teacher module.
- **Shutdown, restart, lock** – a permission to perform power-related operations, including shutdown, reboot, stand-by etc.; lock and unlock the computer remotely.
- **Receive messages** – a permission to receive messages from the Teacher computer.
- **Log Events** – a permission for Events Watcher and Events Logger tools.
- **Change system settings** - access to system settings.
- **Allow Help Requests** - when enabled, a student can send Help requests to Teachers through the Student console.

## Appearance



**Show popup notifications for certain operations** – when enabled, the student module will display a popup notification to a user when the teacher uses Control (Remote Desktop) command, runs a program or URL on the student computer, applies a new restriction profile, and for several other operations.

**Enable Help Requests** - when enabled, a student can send help requests to teachers.

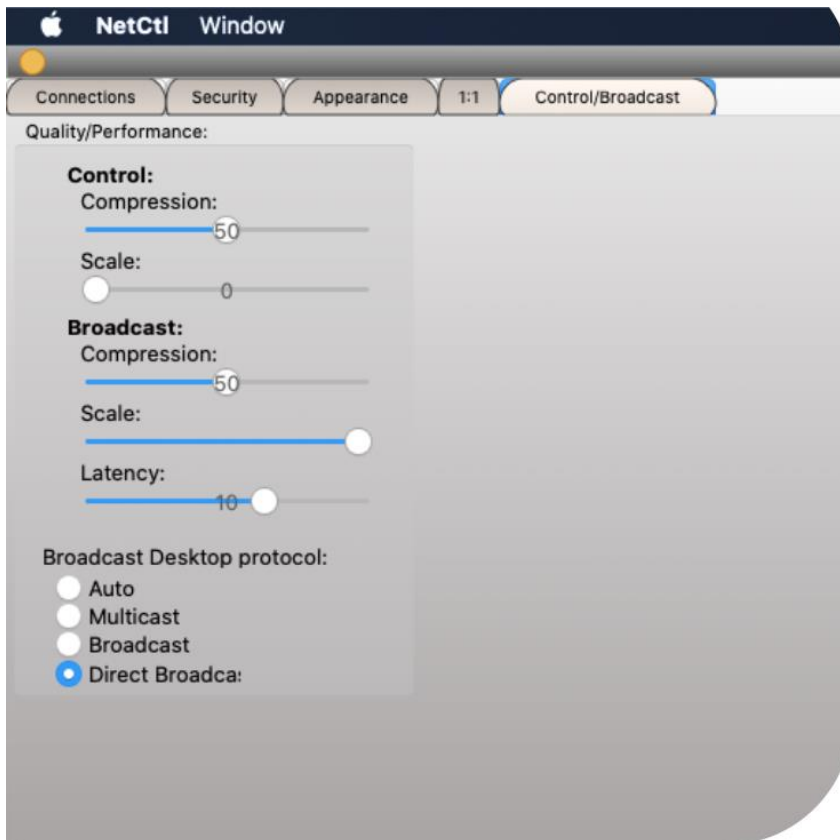
**Enable Hand Raising** – when enabled, a student can “raise hand” in the Student Console. This raised hand status will be shown in the teacher console, the teacher can accept the request (“to call on” the student) or reset the status.

**Enable User statuses** – enables “user statuses”. The user status is a short string that is visible on teacher computer in student connection properties, and it’s shown in a tooltip when a student is changing his/her status. With this tool students can quickly communicate with teachers sending short messages to the teacher.

**Allow connecting Instructors by IP address/DNS name** – if enabled, students can connect Instructors by IP address or network computer name of the teacher computer.

**Allow connecting Instructors by Teacher Session ID** - if enabled, students can connect Instructors by Teacher session ID.

## Control/Broadcast



### Quality/Performance.

Use this option to adjust the performance/quality level for Remote Desktop and Broadcast Desktop features.

### Broadcast Desktop protocol:

Usually, we recommend using **Direct Broadcast** protocol for better performance of Broadcast Desktop engine.

In several cases, in busy networks, in low bandwidth networks, when you are sharing the screen with multiple computers, in the performance is insufficient, you may need to change the protocol to **Multicast** (if supported by your network); or, if *Multicast* is not supported, to **Broadcast**. If the **Auto** mode is used, the teacher module will try to determine automatically what mode (Multicast or Broadcast) is supported.

---

## H. How to uninstall the software

To uninstall the software, just please locate in **Finder** your **/Applications** folder, find in the folder the respective teacher or student module, right click it, click **Move to Trash** menu command. Administrator privileges are required to uninstall the software on student computers.

If you need to prevent unauthorized uninstallation of the software by students, we recommend to adjust the program folder privileges (**/Applications/Net Control 2 Student Module**), enabling read-only access for student user accounts.

## I. Features

Commands and features of Net Control 2 Classroom are described in details in the *Net Control 2 Tools and Features Guide*.

**The student module for OS X currently supports the following features only:**

- Student computer **screenshots in thumbnails** on the teacher computer
- Student computer information (an operating system version, computer name and version etc.)
- **“Control”/Remote Desktop** tool. Several features available for Windows, are not supported on macOS (screen annotations, locking during the remote session, Ctrl+Alt+Del simulation, “Move an active window to the top-left screen corner” command).
- **Broadcast Desktop** tool
- **Broadcast Student’s screen to others**
- **Screenshots View**
- **Internet restrictions.** Safari and Google Chrome browsers are supported only.
- **Program restrictions.**
- **Sound muting.**
- **Program Manager:** terminate programs, run programs, documents, URLs etc. from Desktop or */Applications* folder; run programs/URLs from a command line.
- **Shutdown manager:** shutdown, reboot, logoff, hibernate and sleep the student computer (**only if allowed by the operating system settings**). The “forced” style for shutdown operations may be not supported.
- **Send/Collect Files** – file operations are currently available only on Net Control 2 Common Files folder, on macOS systems it is mapped to */Users/UserLogin/Documents/Net Control 2* folder (where */Users/UserLogin* is a home folder of a currently logged in user).
- **Lock** – locks the student computer temporarily. “Keep the locked state after reboot” option is not supported on macOS.
- **Quick Run**
- **Messages** – full screen or windowed messages; setting up the **system sound volume** remotely. **Text-to-speech** using built-in Apple’s TTS engine.
- **Chats and Help requests.**
- **Student registration.**
- **Whiteboard.**
- **Rewards.**
- **Grades.**
- **Journal-related features.**
- **Quizzes.**
- **Polls.**
- **Desktop Records Player.** Sound in records is not supported currently.
- Changing the student module **settings remotely** from the teacher module.
- **Connecting a teacher computer** from the student computer **by IP address** or a DNS name (if allowed by the student module settings).
- Students can **initiate connections to a teacher** by using the **Teacher Session ID**.

- 
- The student computer may be found and added to the teacher console, using **Scan** button of the teacher console, if *Connection Password* is set up in the student module settings.
  - **Raise Hand** tool.
  - **Statuses**.
- 

## **J. Other resources**

The following guides are also available on <https://www.netcontrol2.com/downloads> page:

**Net Control 2 Classroom. The Installation and Configuration Guide** (for Windows) describes the main principles of the teacher and student module configuration.

**Net Control 2 Classroom. The Tools and Features Guide** – provides detailed information about tools and features of the software:



## Table of Contents

General information.....	1
Hardware requirements and software environment .....	2
A. Packages.....	2
B. Teacher module installation .....	2
C. Teacher module initial configuration.....	3
D. Student module installation.....	5
E. Student module initial configuration.....	7
F. Authorizations.....	9
G. Student module settings.....	10
Other settings.....	10
Connections.....	10
Security .....	11
Appearance.....	13
Control/Broadcast .....	14
H. How to uninstall the software .....	14
I. Features .....	15
J. Other resources .....	16

The software described in this book is furnished under a license agreement and may be used only in accordance with the terms of the agreement.

Copyright ©2024 EduSoft LLC All Rights Reserved.

Any technical documentation that is made available by EduSoft LLC is the copyrighted work of EduSoft LLC and is owned by EduSoft LLC

NO WARRANTY. The technical documentation is being delivered to you AS-IS and the author makes no warranty as to its accuracy or use. Any use of the technical documentation or the information contained therein is at the risk of the user.

Documentation may include technical or other inaccuracies or typographical errors. The author reserves the right to make changes without prior notice.

Apple, macOS, Apple logo are registered trademarks of Apple Inc. Microsoft, Windows, and the Windows logo are registered trademarks of Microsoft Corporation. Other product names mentioned in this manual may be trademarks or registered trademarks of their respective companies.